



**ULTIMATE PRECISION,  
NO PERSPIRATION**

**SHOWA  
381**

BREATHABLE  
MICROFIBRE GLOVE



  
**SHOWA**  
Always Innovating. Never Imitating.

# SHOWA 381

WE PIONEER THE QUALITY,  
PERFORMANCE AND PROTECTION  
TO GIVE ORDINARY HANDS  
EXTRAORDINARY ABILITIES.

Market research illustrates the need to converge to the use of high abrasion resistant gloves that are lightweight and comfortable to match workers needs for intricate handling within assembly applications. At SHOWA we develop products to meet our customer needs, and to provide high abrasion resistance and good sensitivity at the same time.

We believe that comfort is as important as the protection, which is why we reduced the weight and improved the efficiency for this new model. Our Research and Development Department responds to the market and customers' demands with a new solution for workers whose actions range from general handling to precise assembling. They need an optimized grip and a maximum comfort during tasks which require an extended wear times and durable life.

In order to offer this premium combination, **we engineered a microfibre fabric**. The diameter of this material is smaller than a strand of silk, which is itself already about 1/5 the diameter of a human hair.



## 4 WEEK TRIAL PROGRAMME

Free intricate assessment process designed to identify potential cost savings by:

- ✗ Strategic trial plan
- ✗ Adopting new technologies
- ✗ Reducing costs by reducing stock and capital bonding in PPE
- ✗ Improving employees safety and satisfaction
- ✗ Consolidating products
- ✗ Adopting Best practices for use and control





# SAY GOODBYE TO SWEATY HANDS

## TAKE WORKERS COMFORT AND PROTECTION TO THE NEXT LEVEL

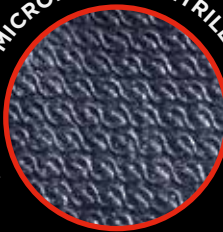
To protect workers who move between tasks from general handling to intricate assembly, it requires **high abrasion performance, dexterity, finger sensitivity and comfort**, SHOWA 381 is the ideal multipurpose solution. It provides the lightest SHOWA microporous nitrile coated glove with an abrasion resistance up to level 4.

It's designed and comfort is further enhanced as breathability and moisture evacuation by 20% more than our standard offering.

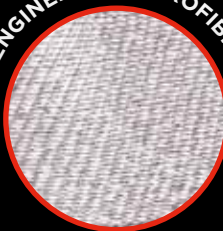
**ENHANCED BREATHABILITY**   
BOOST VAPOUR PERMEATION



**EMBOSSED MICROPOROUS NITRILE PALM FINISH**



**SHOWA ENGINEERED MICROFIBRE YARNS**



**INCREASED GRIP**

DISPERSES LIQUID AWAY

**SHOWA** BREATHABLE MICROFIBRE GLOVE



# SHOWA 381

**LINER - POLYESTER AND SPANDEX MICROFIBRE**

**COATING/POLYMER - MICROPOROUS FOAMED NITRILE COATING**

**FEATURES: REVOLUTIONARY SHOWA ENGINEERED FIBRE**

- + Embossed microporous nitrile palm finish.
- + SHOWA engineered microfibre yarns (0,52 denier).
- + High abrasion resistance level 4.
- + Ultra-light weight: 19 g.
- + Palm Thickness : 0,90mm.
- + Excellent fitting due to optimal liner design.
- + Unique SHOWA ergonomic shape that replicates the natural curve of the human hand.

**BENEFITS: LIGHTER AND STRONGER**

- + Abrasion resistance lasts twice as longer as SHOWA 380 (8000 cycles vs 4000).
- + Embossed nitrile palm finish disperses oil away to increase grip and longevity in light oily environments.
- + The 0.84mm finger thickness provides an excellent level of tactility and sensitivity.
- + Microfibre properties boost vapour permeation and enhances breathability thus drier hands and less sweat.
- + Exceptional suppleness, ultra-comfort and hand fitting thanks to the combination of microfibre and spandex.
- + A flexible glove designed for easy movement and extended wear.
- + Seamless knit designed to prevent irritation.
- + Low lint with microfibre.
- + No latex allergy risks.

**RECOMMENDED  
FOR THESE LINES OF WORK:**



AUTOMOTIVE



CONSTRUCTION



DIY



ENGINEERING



LOGISTIC AND  
WAREHOUSING

**APPLICATION**

- General handling
- Assembly dry and oily parts
- Handling of small / fine parts
- Maintenance
- Mounting and dismantling
- Power tooling
- Gardening

**SHOWA  
TECHNOLOGY:**



BREATHABLE



PREMIUM GRIP

**PACKAGING:**

120 pairs per Box  
12 polybags / Box  
10 pairs per polybag pack

**AVAILABLE SIZES:**

- 6/S
- 7/M
- 8/L
- 9/XL
- 10/XXL

**COLOUR OF SUPPORTED / COATING:**

Black / Grey



## THE SHOWA 381 MODEL IS A COMBINATION OF 2 TECHNOLOGIES

In the first place, the microporous nitrile coating grants exceptional grip while allowing warm air and moisture from inside to escape, thus maintaining your hands dry.

In the second place, the microfibre liner absorbs quickly perspiration and moisture.

## DID YOU KNOW?



This technology is comparable to capillary action. This natural phenomenon entails the capacity of a liquid to flow into narrow spaces without the assistance of, and in opposition to, external forces like gravity and evacuation. Besides this propriety is activated by the heat generated by your hand, which triggers natural vaporisation. The drying time is by 20% faster than our standard for cooler and dryer hands.



Athletes often use this microfibre fabric to improve their performances during competitions and in order to reach their accomplishments, such as cycling jerseys, as it is a material that provides a high capacity to absorb sweat and water while avoiding irritation. By using this fibre for gloves for the first time, your hands will benefit from the same advantages and comfort of these sportsmen.

## ABRASION RESISTANCE TESTED: EN388

Better abrasion resistance than other SHOWA nitrile item:

		381	380	370
<b>Abrasion (N=4)</b>	<b>Ave.</b>	> 8,000	4,000	4,625
	<b>Max</b>	> 8,000	5,000	> 8,000

Cat. II  
89/686/EEC



0120

EN388 : 2003



4121



## **INNOVATION MAKES SENSE WHEN IT ACTUALLY CONTRIBUTES SOMETHING USEFUL**

Each time SHOWA develops a new concept, it improves wearer comfort and safety. This ability to anticipate needs and provide solutions that eventually become benchmarks is based on unrivalled technological expertise and is fully autonomous. This independence extends to developing our own hand formers, yarns, coatings, polymers and unique manufacturing process through inspection and packaging to give us 100% quality control at every level.

**THIS GIVES US**  
**[100%]**  
**QUALITY CONTROL  
AT EVERY LEVEL**

## **OUR PHILOSOPHY AT SHOWA**

“Our mission is to protect workers needing hand protection whilst enhancing their ability to perform a multitude of tasks, keeping hands safe during and after work, SHOWA provides highly performing, durable and innovative solutions thanks to a corporate philosophy of investing in research and development to introduce the next generation of innovative hand protection improving user comfort, premium safety and satisfaction”.



WTC - Tower I - Strawinskylaan 1817 - 1077 XX Amsterdam - Netherlands  
Tel: +31 (0) 88 004 2100 - Fax: +31 (0) 88 004 2199 - info@showagroup.eu

[www.SHOWAgroup.eu](http://www.SHOWAgroup.eu)