



FOOD INDUSTRY

GLOVE • SERIES

CN SERIES | FOOD GRADE NITRILE
CHEMICAL RESISTANT | SINGLE USE NITRILE
CUT RESISTANT | HEAT RESISTANT | COLD PROTECTION
MAINTENANCE

**THE ULTIMATE HAND PROTECTION
ENGINEERED FOR STRENGTH, BUILT FOR SAFETY**

CN SERIES



- ADVANTAGES:**
- Biodegradable
 - Easy on/off liner
 - Chemical & oil resistant

SHOWA CN740

FEATURES:

SIZES: S-XXL
7/S | 8/M | 9/L | 10/XL | 11/XXL

GRIP: Wave Pattern Finish

THICKNESS: 15 mil

LENGTH: 13"

APPLICATIONS: Laboratory work, Food handling, Meat & Vegetable processing, Janitorial washing & cleaning



- ADVANTAGES:**
- Biodegradable
 - Easy on/off liner
 - Chemical & oil resistant

SHOWA CN741

FEATURES:

SIZES: S-XXL
7/S | 8/M | 9/L | 10/XL | 11/XXL

GRIP: Wave Pattern Finish

THICKNESS: 15 mil

LENGTH: 15"

APPLICATIONS: Laboratory work, Food handling, Meat & Vegetable processing, Janitorial washing & cleaning



- ADVANTAGES:**
- Biodegradable
 - Easy on/off liner
 - Chemical & oil resistant

SHOWA CN750

FEATURES:

SIZES: S-XXL
7/S | 8/M | 9/L | 10/XL | 11/XXL

GRIP: Wave Pattern Finish

THICKNESS: 18 mil

LENGTH: 13"

APPLICATIONS: Laboratory work, Food handling, Meat & Vegetable processing, Janitorial washing & cleaning



- ADVANTAGES:**
- Biodegradable
 - Easy on/off liner
 - Chemical & oil resistant

SHOWA CN751

FEATURES:

SIZES: S-XXL
7/S | 8/M | 9/L | 10/XL | 11/XXL

GRIP: Wave Pattern Finish

THICKNESS: 18 mil

LENGTH: 15"

APPLICATIONS: Laboratory work, Food handling, Meat & Vegetable processing, Janitorial washing & cleaning

FOOD GRADE NITRILE



- ADVANTAGES:**
- Unlined interior
 - Forearm protection

SHOWA 727

FEATURES:

SIZES: XS-XXL
6/XS | 7/S | 8/M | 9/L
10/XL | 11/XXL

GRIP: Bisque

THICKNESS: 15 mil

LENGTH: 13"

 **FOOD CONTACT SAFE**
+FDA 21 CFR 177.2600

APPLICATIONS: Food packaging & handling, Fruit & vegetable processing, meat processing, washing & cleaning



- ADVANTAGES:**
- Unlined interior
 - Extended length

SHOWA 737

FEATURES:

SIZES: S-XXL
7/S | 8/M | 9/L | 10/XL | 11/XXL

GRIP: Bisque

THICKNESS: 22 mil

LENGTH: 15"

 **FOOD CONTACT SAFE**
+FDA 21 CFR 177.2600

APPLICATIONS: Food packaging & handling, Fruit & vegetable processing, meat processing, washing & cleaning



- ADVANTAGES:**
- Cotton flocked liner
 - Easy on & off

SHOWA 730

FEATURES:

SIZES: XS-XXL
6/XS | 7/S | 8/M | 9/L
10/XL | 11/XXL

GRIP: Bisque

THICKNESS: 15 mil

LENGTH: 13"

 **FOOD CONTACT SAFE**
+FDA 21 CFR 177.2600

APPLICATIONS: Food packaging & handling, Fruit & vegetable processing, meat processing, washing & cleaning



- ADVANTAGES:**
- Unlined interior
 - Elbow length

SHOWA 747

FEATURES:

SIZES: S-XXL
7/S | 8/M | 9/L | 10/XL | 11/XXL

GRIP: Bisque

THICKNESS: 22 mil

LENGTH: 19"

 **FOOD CONTACT SAFE**
+FDA 21 CFR 177.2600

APPLICATIONS: Food packaging & handling, Fruit & vegetable processing, meat processing, washing & cleaning

FOOD GRADE NITRILE



SHOWA 719

FEATURES:

SIZES: S-XXL
7/S | 8/M | 9/L | 10/XL | 11/XXL
GRIP: Diamond Pattern
THICKNESS: 11 mil
LENGTH: 13"

 **FOOD CONTACT SAFE**
+FDA 21 CFR 177.2600

APPLICATIONS: Food packaging & handling, meat processing, Light Chemical Handling in Horticulture/Agriculture, Laboratory, Cleaning

ADVANTAGES:

- Forearm protection
- Water, oil & chemical protection



SHOWA 729

FEATURES:

SIZES: S-XXL
7/S | 8/M | 9/L | 10/XL | 11/XXL
GRIP: Diamond Pattern
THICKNESS: 15 mil
LENGTH: 13"

 **FOOD CONTACT SAFE**
+FDA 21 CFR 177.2600

APPLICATIONS: Food packaging & handling, Fruit & vegetable processing, meat processing, washing & cleaning

ADVANTAGES:

- Forearm protection
- Water, oil & chemical protection



SHOWA 719B

FEATURES:

SIZES: XS-XXL
6/XS | 7/S | 8/M | 9/L
10/XL | 11/XXL
GRIP: Diamond Pattern
THICKNESS: 11 mil
LENGTH: 13"

 **FOOD CONTACT SAFE**
+FDA 21 CFR 177.2600

APPLICATIONS: Food packaging & handling, meat processing, Light Chemical Handling in Horticulture/Agriculture, Laboratory, Cleaning

ADVANTAGES:

- Forearm protection
- Water, oil & chemical protection



SHOWA 732

FEATURES:

SIZES: S-XXL
7/S | 8/M | 9/L | 10/XL | 11/XXL
GRIP: Diamond Pattern
THICKNESS: 15 mil
LENGTH: 13"

 **FOOD CONTACT SAFE**
+FDA 21 CFR 177.2600

APPLICATIONS: Food packaging & handling, meat processing, Light Chemical Handling in Horticulture/Agriculture, Laboratory, Cleaning

ADVANTAGES:

- Forearm protection
- Water, oil & chemical protection

SHOWAgroup.com

SHOWA CUSTOMER SERVICE | 800.241.0323

CHEMICAL RESISTANT



SHOWA NSK26

FEATURES:

SIZES: S-XL
8/S | 9/M | 10/L | 11/XL

GRIP: Rough

LINER: cotton

LENGTH: 26"

ADVANTAGES:

- Full arm protection
- Oil-resistant
- Water-resistant
- Robust grip

 **FOOD CONTACT SAFE**
+FDA 21 CFR 177.2600

APPLICATIONS:
Laboratory work, Food handling, Meat & Vegetable processing, Janitorial washing & cleaning

SHOWA NSK24

FEATURES:

SIZES: S-XL
8/S | 9/M | 10/L | 11/XL

GRIP: Rough

LINER: seamless knit cotton

LENGTH: 14"

ADVANTAGES:

- Biodegradable
- Forearm protection
- Chemical & oil resistant

 **FOOD CONTACT SAFE**
+FDA 21 CFR 177.2600

APPLICATIONS: Laboratory work, Food handling, Meat & Vegetable processing, Janitorial washing & cleaning



SHOWA 772

FEATURES:

SIZES: S-XL
7/S | 8/M | 9/L | 10/XL

GRIP: Rough

LINER: cotton

LENGTH: 26"

APPLICATIONS:
Laboratory work, Food handling, Meat & Vegetable processing, Janitorial washing & cleaning

ADVANTAGES:

- Full arm protection
- Impermeable
- Chemical & oil resistant



SHOWA CS720

FEATURES:

SIZES: S-XXL
7/S | 8/M | 9/L | 10/XL | 11/XXL

GRIP: Rough

COATING: Double coated nitrile

LENGTH: 12"

 **FOOD CONTACT SAFE**
+FDA 21 CFR 177.2600

APPLICATIONS: Laboratory work, Food handling, Meat & Vegetable processing, Janitorial washing & cleaning

ADVANTAGES:

- Extended cuffs
- Oil & Grease protection
- Increased dexterity



SHOWA CS721

FEATURES:

SIZES: S-XXL
7/S | 8/M | 9/L | 10/XL | 11/XXL

GRIP: Rough

COATING: Double coated nitrile

LENGTH: 14"

 **FOOD CONTACT SAFE**
+FDA 21 CFR 177.2600

APPLICATIONS: Laboratory work, Food handling, Meat & Vegetable processing, Janitorial washing & cleaning

ADVANTAGES:

- Extended cuffs
- Oil & Grease protection
- Increased dexterity



SINGLE USE NITRILE



ADVANTAGES:

- EBT Biodegradable
- Increased Dexterity
- Low Modulus Nitrile for enhanced flexibility

SHOWA 7500PF

FEATURES:

SIZES: 5-6/XS - 10-11/XXL

GRIP: Textured fingertips

THICKNESS: 4mil

LENGTH: 9.5"

DISPENSER SIZE: (100)

 **FOOD CONTACT SAFE**
+FDA 21 CFR 177.2600

APPLICATIONS: Food Prep, Food Service, Product Inspection, Food Safe Cleaning & Washing



ADVANTAGES:

- Accelerator-Free to reduce risk of allergies
- EBT Biodegradable
- Extreme Tactile Feel
- Low Modulus Nitrile for enhanced flexibility

SHOWA 7502PF

FEATURES:

SIZES: 5-6/XS - 10-11/XXL

GRIP: Textured fingertips

THICKNESS: 2.5 mil

LENGTH: 9.5"

DISPENSER SIZE: (200)

 **FOOD CONTACT SAFE**
+FDA 21 CFR 177.2600



ADVANTAGES:

- Touchscreen Compatible
- Easy Dispense

NEW GLOVE PULL OFF FUNCTION

SHOWA 7503PF

FEATURES:

SIZES: 6/XS - 10/XL

GRIP: Textured fingertips

THICKNESS: 2.5 mil

LENGTH: 9.5"

DISPENSER SIZE: (100)

SafeDoff™ Technology is a textured tab located on the thumb side cuff, designed for safer and faster doffing.



ADVANTAGES:

- EBT Biodegradable
- Increased Dexterity
- Low Modulus Nitrile for enhanced flexibility

SHOWA 6110PF

FEATURES:

SIZES: 5-6/XS - 10-11/XXL

GRIP: Textured fingertips

THICKNESS: 4mil

LENGTH: 9.5"

DISPENSER SIZE: (100)

 **FOOD CONTACT SAFE**
+FDA 21 CFR 177.2600

APPLICATIONS: Food Prep Food Service, Product Inspection, Food Safe Cleaning & Washing



SINGLE USE NITRILE [CONTINUED]



ADVANTAGES:

- Accelerator-Free to reduce risk of allergies
- EBT Biodegradable
- Hi-Visibility Color
- Low Modulus Nitrile for enhanced flexibility

SHOWA

7705PFT

FEATURES:

SIZES: 6-7/S- 9-10/XL

GRIP: Textured fingertips

THICKNESS: 4mil

LENGTH: 9.5 inches

DISPENSER SIZE: (100)



FOOD CONTACT SAFE
+FDA 21 CFR 177.2600

APPLICATIONS: Food Prep, Food Service, Product Inspection, Food Safe Cleaning & Washing



ADVANTAGES:

- Low Modulus Nitrile for enhanced flexibility
- EBT Biodegradable
- Anti-Static

SHOWA

6112PF

FEATURES:

SIZES: 5-6/XS - 10-11/XXL

GRIP: Textured fingertips

THICKNESS: 0.10 mm

LENGTH: 9.5 inches

DISPENSER SIZE: (100)



FOOD CONTACT SAFE
+FDA 21 CFR 177.2600

APPLICATIONS: Food Prep, Food Service, Product Inspection, Food Safe Cleaning & Washing



SHOWA

887

FEATURES:

SIZES: 6-7/S - 9-10/XL

GRIP: Textured fingertips

THICKNESS: 6mil

LENGTH: 15.7"

DISPENSER SIZE: (50)



FOOD CONTACT SAFE
+FDA 21 CFR 177.2600

APPLICATIONS: Food Processing, Mixing Raw Materials, Washing Deep Pots, Quality Control, & Cleaning

ADVANTAGES:

- Extended Length
- Increased Thickness

SHOWAgroup.com

SHOWA CUSTOMER SERVICE | 800.241.0323



ADVANTAGES:

- Accelerator-Free to reduce risk of allergies
- EBT Biodegradable
- Anti-Static
- Low Modulus Nitrile for enhanced flexibility

SHOWA
7700PFT

FEATURES:

SIZES: 6-7/S - 9-10/XL

GRIP: Textured fingertips

THICKNESS: 4mil

LENGTH: 9.5"

DISPENSER SIZE: (50)

 **FOOD CONTACT SAFE**
+FDA 21 CFR 177.2600

APPLICATIONS: Food Prep, Food Service, Product Inspection, Food Safe Cleaning & Washing



ADVANTAGES:

- Accelerator-Free to reduce risk of allergies
- EBT Biodegradable
- Extended cuff length
- Increased thickness

SHOWA
9700PF

FEATURES:

SIZES: 6-7/S - 9-10/XL

GRIP: Textured fingertips

THICKNESS: 6mil

LENGTH: 11"

DISPENSER SIZE: (100)

 **FOOD CONTACT SAFE**
+FDA 21 CFR 177.2600

APPLICATIONS: Food Prep, Food Service, Product Inspection, Food Safe Cleaning & Washing



ADVANTAGES:

- EBT Biodegradable
- Increased thickness
- Low Modulus Nitrile for enhanced flexibility

SHOWA
8005PF

FEATURES:

SIZES: 6-7/S - 9-10/XL

GRIP: Textured fingertips

THICKNESS: 8mil

LENGTH: 9.5"

DISPENSER SIZE: (50)

 **FOOD CONTACT SAFE**
+FDA 21 CFR 177.2600

APPLICATIONS: Food Prep, Food Service, Product Inspection, Food Safe Cleaning & Washing



ADVANTAGES:

- Accelerator-Free to reduce risk of allergies
- EBT Biodegradable
- Extended cuff length
- Increased thickness

SHOWA
9905PF

FEATURES:

SIZES: 6-7/S - 9-10/XL

GRIP: Textured fingertips

THICKNESS: 6mil

LENGTH: 11"

DISPENSER SIZE: (50)

 **FOOD CONTACT SAFE**
+FDA 21 CFR 177.2600

APPLICATIONS: Food Prep, Food Service, Product Inspection, Food Safe Cleaning & Washing



ADVANTAGES:



A secure and reliable grip even in the presence of oils or liquids

SHOWA PyraGrip™
709B

FEATURES:

SIZES: S-XXL
7/S | 8/M | 9/L | 10/XL | 11/XXL

GRIP: Unique Channel System Diverts Fluid

THICKNESS: 8 mil

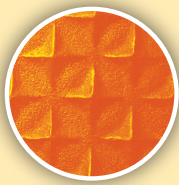
LENGTH: 9.5"

 **FOOD CONTACT SAFE**
+FDA 21 CFR 177.2600

APPLICATIONS: Food Service Food Safe Cleaning & Washing



ADVANTAGES:



A secure and reliable grip even in the presence of oils or liquids

SHOWA PyraGrip™
709HVO


FEATURES:

SIZES: S-XXL
7/S | 8/M | 9/L | 10/XL | 11/XXL

GRIP: Unique Channel System Diverts Fluid

THICKNESS: 8 mil

LENGTH: 9.5"

 **FOOD CONTACT SAFE**
+FDA 21 CFR 177.2600

APPLICATIONS: Food Service Food Safe Cleaning & Washing

CUT RESISTANT LINERS



A4 ANSI LEVEL 4 CUT RESISTANT

ADVANTAGES:

- CutLevel 4
- Machine washable
- Breathable
- Form-fitting

SHOWA
234X

FEATURES:

SIZES: S-XXL
6/S | 7/M | 8/L | 9/XL | 10/XXL

GRIP: N/A uncoated

LINER: 15-gauge seamless knit Spandex/engineered yarn with HPPE

FOOD CONTACT SAFE
+FDA 21 CFR 177.2600

APPLICATIONS: Food Packaging, Food Handling, Meat & Seafood Processing, Canning, & Bottling



A3 ANSI LEVEL 3 CUT RESISTANT

ADVANTAGES:

- CutLevel 3
- Machine washable
- Breathable
- Form-fitting

SHOWA
8113

FEATURES:

SIZES: XS-XXL
6/XS | 7/S | 8/M | 9/L | 10/XL | 11/XXL

GRIP: N/A uncoated

LINER: 13-gauge seamless Thermax® lined knit with AlphSan®

FOOD CONTACT SAFE
+FDA 21 CFR 177.2600

APPLICATIONS: Food Packaging, Food Handling, Meat & Seafood Processing, Canning, & Bottling



A5 ANSI LEVEL 5 CUT RESISTANT

ADVANTAGES:

- CutLevel 5
- Machine washable
- Breathable
- Form-fitting

SHOWA
8110

FEATURES:

SIZES: S-XL
7/S | 8/M | 9/L | 10/XL

GRIP: N/A uncoated

LINER: 10-gauge seamless knit HPPE

FOOD CONTACT SAFE
+FDA 21 CFR 177.2600

APPLICATIONS: Food Packaging, Food Handling, Meat & Seafood Processing, Canning, & Bottling



A7 ANSI LEVEL 7 CUT RESISTANT

ADVANTAGES:

- CutLevel 7
- Machine washable
- Breathable
- Form-fitting

SHOWA
8127

FEATURES:

SIZES: S-XL
7/S | 8/M | 9/L | 10/XL

GRIP: N/A uncoated

LINER: 7-gauge seamless knit HPPE

FOOD CONTACT SAFE
+FDA 21 CFR 177.2600

APPLICATIONS: Food Packaging, Food Handling, Meat & Seafood Processing, Canning, & Bottling



Layer with a SHOWA single use nitrile glove to keep the hands dry and clean during food prep.

SHOWA
FC200B
FC200W

FEATURES:

SIZES: XS-XXXL
6/XS | 7/S | 8/M | 9/L | 10/XL | 11/XXL | 12/XXXL

GRIP: uncoated

LINER: HPPE 13-gauge seamless knit

FOOD CONTACT SAFE
+FDA 21 CFR 177.2600

APPLICATIONS: Food Packaging, Food Handling, Meat Processing

A4 ANSI LEVEL 4 CUT RESISTANT

ADVANTAGES:

- CutLevel 4
- Comfortable fit
- Superior dexterity
- Breathable

CUT RESISTANT SLEEVES



SHOWA S237-16/T

FEATURES:

SIZES: 9/L

LINER: 7-gauge Seamless engineered fiber with HPPE

LENGTH: 16" sleeve

T= Thumb loop



FOOD CONTACT SAFE
+FDA 21 CFR 177.2600



ANSI LEVEL 3
CUT RESISTANT

ADVANTAGES:

- CutLevel 3
- Machine washable
- Form-fitting
- Flexible



SHOWA S8115-10/T

FEATURES:

SIZES: M-XL
8/M | 9/L | 10/XL

LINER: 15-gauge
Seamless Knit HPPE

LENGTH: 10" sleeve

T= Thumb loop



FOOD CONTACT SAFE
+FDA 21 CFR 177.2600



ANSI LEVEL 4
CUT RESISTANT

ADVANTAGES:

- CutLevel 4
- Forearm protection
- Breathable
- Flexible



SHOWA S8115-16/T

FEATURES:

SIZES: M-XL
8/M | 9/L | 10/XL

LINER: 7-gauge Seamless
engineered fiber with HPPE

LENGTH: 16" sleeve

T= Thumb loop



FOOD CONTACT SAFE
+FDA 21 CFR 177.2600



ANSI LEVEL 3
CUT RESISTANT

ADVANTAGES:

- CutLevel 3
- Machine washable
- Form-fitting
- Flexible

HEAT RESISTANT



SHOWA

6781R

FEATURES:

SIZES: 10/L

GRIP: Etched rough

LINER: Insulated cotton jersey liner

COATING: Neoprene



FOOD CONTACT SAFE

+FDA 21 CFR 177.2600

APPLICATIONS: Handling Hot Parts, Bakeries, Chemical Spray & Treatment

ADVANTAGES:

- Protects hands from cold and stay safe in temperatures up to 482°F, or 250°C
- Burn protection
- Extended cuff length
- Increased thickness



SHOWA

8814

FEATURES:

SIZES: S-XL

7/S | 8/M | 9/L | 10/XL

GRIP: Rough

COATING: Spraycoated Neoprene

+FDA 21 CFR 177.2600



FOOD CONTACT SAFE

+FDA 21 CFR 177.2600

APPLICATIONS:

Handling Hot Parts, Bakeries & Commercial Ovens, Handling Castings, Glassware & Bakeware, Food Service, Autoclaves, Inspection

ADVANTAGES:

- Heat-resistant at temperatures up to 500°F/260°C for 15 seconds
- Machine washable
- Increased dexterity



SHOWA

6797R

FEATURES:

SIZES: 10/L

GRIP: Rough, fully coated Neoprene

LINER: cotton

COATING: Fully coated Neoprene

+FDA 21 CFR 177.2600



FOOD CONTACT SAFE

+FDA 21 CFR 177.2600

APPLICATIONS: Coating Prep, Chemical Handling & Spray, Laboratory, Pharma & Analysis

ADVANTAGES:

- Acid-resistant
- Abrasion-resistant
- Elbow-length gauntlet keeps wearer safe from acids, oils, chemicals and caustics
- Breathable

SHOWAgroup.com

SHOWA CUSTOMER SERVICE | 800.241.0323

COLD PROTECTION



SHOWA ATLAS®

GW345

FEATURES:

SIZES: M-XXL
7/M | 8/L | 9/XL | 10/XXL

GRIP: Rough

LINER: Seamless knit
Acrylic/Cotton/
Polyester liner

COATING: Natural Rubber Latex

APPLICATIONS: Refrigeration,
Cleaning & Washing, Handling
plants and vegetables,
Maintenance

ADVANTAGES:

- Thermal insulation
- Water-resistant
- Natural Rubber Grip



SHOWA

451

FEATURES:

SIZES: S-XL
7/S | 8/M | 9/L | 10/XL

GRIP: Rough

LINER: Fleece lining

COATING: Natural Rubber Latex

APPLICATIONS: Construction,
Shipping & Receiving, Forklifts,
Maintenance, Refrigeration

ADVANTAGES:

- Thermal insulation
- Natural Rubber Grip
- Flexible
- Ergonomic Shape



SHOWA

XW300

FEATURES:

SIZES: M-XXL
7/M | 8/L | 9/XL | 10/XXL

GRIP: Rough

LINER: Fleece lining

COATING: Foam Natural Rubber

APPLICATIONS:

Maintenance, Shipping &
Receiving, Forklifts,
Refrigeration, Marine &
Fishing Applications

A5 ANSI LEVEL 5
CUT RESISTANT

ADVANTAGES:

- Thermal insulation
- Water-resistant
- Cut Level 5
- Increased Visibility



SHOWA

406

FEATURES:

SIZES: M-XXL
7/M | 8/L | 9/XL | 10/XXL

GRIP: Rough

LINER: Fleece lining

COATING: Foam Natural Rubber

APPLICATIONS: Maintenance,
Shipping & Receiving, Forklifts,
Refrigeration, Marine Applications

ADVANTAGES:

- Thermal insulation
- Water-resistant
- Cold protection

SHOWAgroup.com

SHOWA CUSTOMER SERVICE | 800.241.0323

COLD PROTECTION [CONTINUED]



SHOWA **TEMRES®**

282

FEATURES:

SIZES: M-XXL
8/M | 9/L | 10/XL | 11/XXL

GRIP: Rough

LINER: Fleece lining

COATING: Polyurethane

APPLICATIONS:

Commercial Fishing, Refrigeration, Cleaning & Washing, Handling Plants and Vegetables, Maintenance

ADVANTAGES:

- Thermalinsulation
- Water-resistant
- Breathable
- Remains flexible down to -58 °F



SHOWA

477

FEATURES:

SIZES: M-XXL
7/M | 8/L | 9/XL | 10/XXL

GRIP: Rough

LINER: Fleece lining

COATING: Full Nitrile

APPLICATIONS:

Washing & Cleaning, Bottling, Shipping & Receiving, Maintenance, Cold Storage & Refrigeration

ADVANTAGES:

- Thermalinsulation
- Water-resistant
- Abrasion-resistant
- Oil Grip



SHOWA **TEMRES®**

282-02B

FEATURES:

SIZES: M-XXL
8/M | 9/L | 10/XL | 11/XXL

GRIP: Rough
Fixed insulated acrylic

LINER: Fleece lining

COATING: Polyurethane

APPLICATIONS:

Commercial Fishing, Refrigeration, Cleaning & Washing, Handling plants and vegetables, Maintenance

ADVANTAGES:

- Thermal insulation
- Water-resistant
- Extended cuff with drawcord
- Side release buckle
- Polyurethane coating



SHOWA

460

FEATURES:

SIZES: M-XL
8/M | 9/L | 10/XL

GRIP: Rough

LINER: Seamless knit

COATING: PVC

APPLICATIONS:

Commercial Fishing, Cold Storage & Refrigeration, Washing & Cleaning

ADVANTAGES:

- Thermal insulation
- Water-resistant
- Remains flexible in temperatures as low as -4 °F/-20 °C



SHOWA

495

FEATURES:

SIZES: M-XL
8/M | 9/L | 10/XL

GRIP: Rough

LINER: Fleece lining

COATING: Triple-dipped PVC

APPLICATIONS:

Commercial Fishing, Cold Storage & Refrigeration, Washing & Cleaning

ADVANTAGES:

- Thermal insulation
- Water-resistant
- Protects hands down to -20 °C

MAINTENANCE



SHOWA MFT Pro™

264

FEATURES:

SIZES: S-XXL

6/S | 7/M | 8/L | 9/XL | 10/XXL

COATING: Foam Polyurethane palm

LINER: 13-gauge seamless knit engineered Microfiber and nylon yarn

GRIP: Smooth

APPLICATIONS: Maintenance, Repair, Small Parts Handling

ADVANTAGES:

- Engineerdyarn
- Lightweight
- Breathable



SHOWA

234

FEATURES:

SIZES: S-L

6/S | 7/M | 8/L

GRIP: Smooth

LINER: 13-gauge seamless knit stainless steel/polyester



FOOD CONTACT SAFE
+FDA 21 CFR 177.2600

APPLICATIONS: Maintenance, Repair, Small Parts Handling, Component Assembly, HVAC

A4 ANSI LEVEL 4 CUT RESISTANT

ADVANTAGES:

- CutLevel 4
- Heat-resistant
- Increased dexterity
- Designed for use in knife hand applications



SHOWA MFT Pro™

381

FEATURES:

SIZES: S-XXL 6/S | 7/M | 8/L | 9/XL | 10/XXL

COATING: Microporous Foam Nitrile

LINER: 13-gauge seamless knit engineered Microfiber and nylon yarn

GRIP: Embossed/S-shape

APPLICATIONS: Maintenance, Repair, Small Parts Handling

ADVANTAGES:

- Engineerdyarn
- Lightweight
- Breathable



SHOWA S-TEX®

376

FEATURES:

SIZES: S-XXL

6/S | 7/M | 8/L | 9/XL | 10/XXL

GRIP: 3/4 Coated Nitrile + Foam Nitrile

LINER: 13-gauge seamlessknitstainless steel/polyester

APPLICATIONS: Food Prep, Food Service, Product Inspection, Food Safe Cleaning & Washing

A4 ANSI LEVEL 4 CUT RESISTANT

ADVANTAGES:

- CutLevel4
- Hydrocarbon-resistant
- Oil-resistant
- Flexible



SHOWA S-TEX®

377SC

FEATURES:

SIZES: M-XXL

7/M | 8/L | 9/XL | 10/XXL

GRIP: Foam nitrile

LINER: 13-gauge seamless knit stainless steel/polyester with safety cuff



FOOD CONTACT SAFE
+FDA 21 CFR 177.2600

APPLICATIONS: Mechanical & Engineering, Bottling and Canning, Metal Fabrication Work, Drain Repair

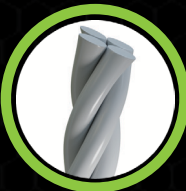
A4 ANSI LEVEL 4 CUT RESISTANT

ADVANTAGES:

- Cut Level 4
- Designed for use in knife hand applications
- Extended cuff length
- Protects against oils, hydrocarbons, grease and abrasions



**TOUCHSCREEN
COMPATABILITY
INTEGRATED**



**ULTRA-HIGH
MOLECULAR WEIGHT
POLYETHYLENE FIBERS**

The new XC810 combines an excellent grip, superb tactility, A4 cut-resistance and touchscreen compatibility for a multitude of industrial applications.



SHOWA
XC810

FEATURES:

SIZES: S-XXL
6/S | 7/M | 8/L | 9/XL | 10/XXL

GRIP: Embossed S-shaped palm

LINER: 18-gauge
seamless knit HPPE

APPLICATIONS: Maintenance,
Repair, Small Parts Handling,
Component Assembly, HVAC

ADVANTAGES:

- CutLevel 4
- Excellent grip
- Touch panel compatible
- Increased dexterity

SHOWAgroup.com

SHOWA CUSTOMER SERVICE | 800.241.0323





SHOWA®

Always Innovating. Never Imitating.